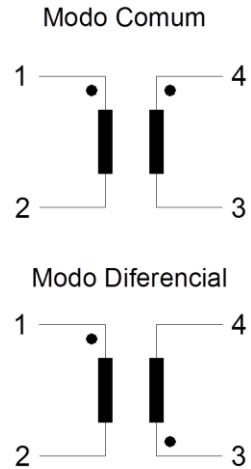


Filtro Modo Comum ou Diferencial

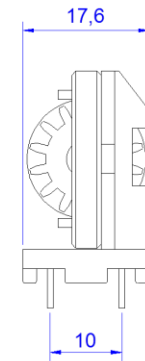
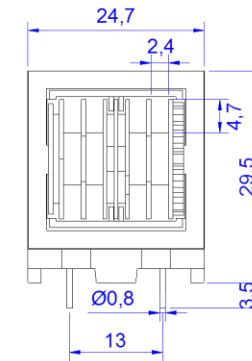
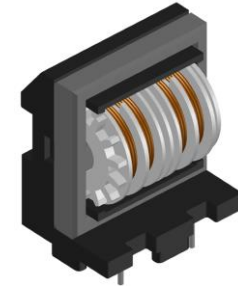
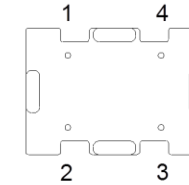
Série ET24V

Esquema Elétrico



Informações Gerais

Medidas: 1kHz x 1Vdc
 Fio de Cobre Eletrolítico: 180° C – Classe H
 Rigidez Dielétrica: 1500Vdc x 60s
 Material Antichama: UL 94
 Rohs



Código	Indutância, L mH	Corrente A	Tolerância	
MCT241000	1	4,1	+/- 30%	Para Filtro Modo Diferencial, trocar MC por MD
MCT243000	3	3,3		
MCT245000	5	2,6		
MCT24010K	10	2,0		
MCT24015K	15	1,6		
MCT24020K	20	1,3		
MCT24030K	30	1,0		
MCT24050K	50	0,8		